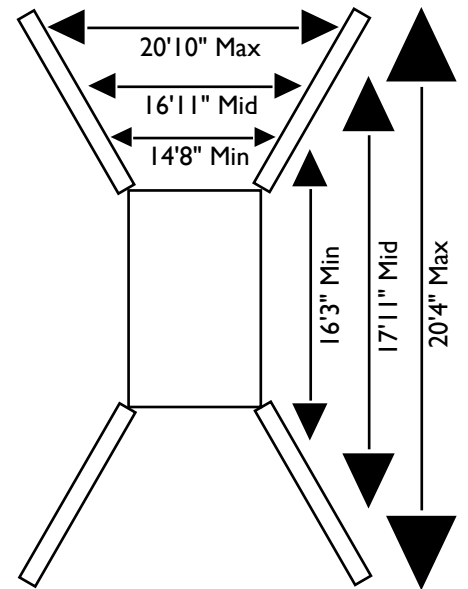
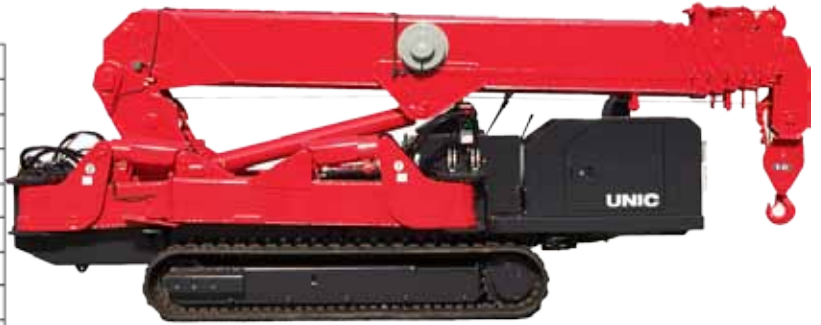
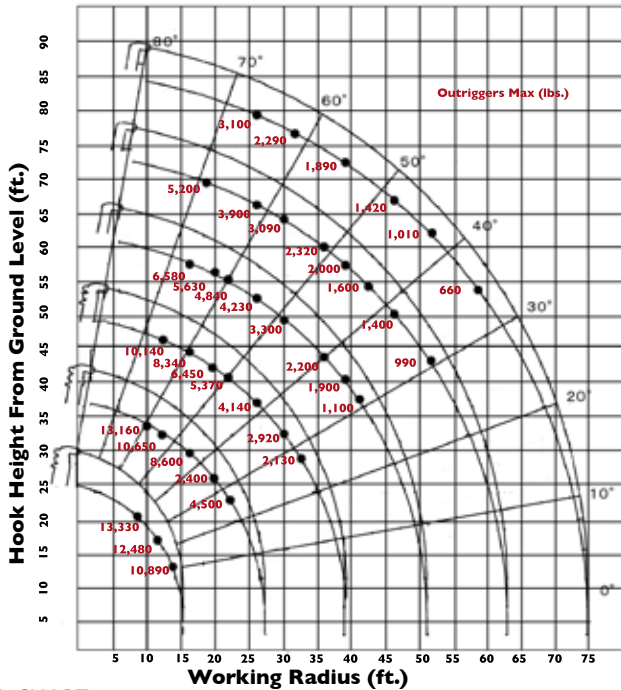




### DESIGNED TO GO WHERE OTHER CRANES CAN'T

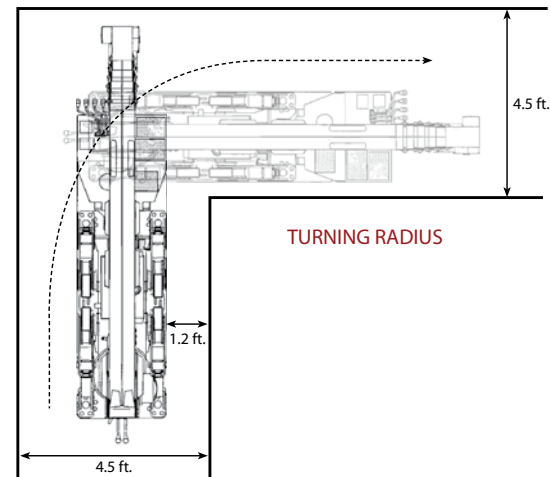
Engineered and manufactured by Japanese industry crane leader FURUKAWA UNIC Corp., the Spydercrane offers versatility, maneuverability and lifting capacity in a compact design that enables you to quickly, safely and easily meet all of your restricted and confined-area lifting requirements. They are distributed in North America by Spydercrane Sales, LLC. Each unit is backed by our 15-plus years of industry and application experience, complete inventory of genuine spare parts and accessories, and superior local service support.

### WORKING RADIUS



### LOAD CHART Lifting capacity varies depending on outrigger configuration and boom length and angle.

| FIRST STAGE EXTENDED                          |        |        |        |        |       |       |       |       |       |      |
|---|--------|--------|--------|--------|-------|-------|-------|-------|-------|------|
| Working Radius (ft.)                          | 9.0    | 10.0   | 11.5   | 13.0   | 14.0  |       |       |       |       |      |
| Outriggers Maximum (lbs.)                     | 13,330 | 13,200 | 12,480 | 10,890 | 8,810 |       |       |       |       |      |
| Outriggers Halfway (lbs.)                     | 13,330 | 13,200 | 12,480 | 10,890 | 8,810 |       |       |       |       |      |
| Outriggers Minimum (lbs.)                     | 13,330 | 13,200 | 12,480 | 10,270 | 8,370 |       |       |       |       |      |
| ALL BOOMS RETRACTED AND SECOND STAGE EXTENDED |        |        |        |        |       |       |       |       |       |      |
| Working Radius (ft.)                          | 6.5    | 10.0   | 11.5   | 13.0   | 16.5  | 19.5  | 23.0  | 23.5  |       |      |
| Outriggers Maximum (lbs.)                     | 13,330 | 13,160 | 12,300 | 10,650 | 8,600 | 6,400 | 5,040 | 4,500 |       |      |
| Outriggers Halfway (lbs.)                     | 13,330 | 13,160 | 12,300 | 10,650 | 8,600 | 5,200 | 3,840 | 3,520 |       |      |
| Outriggers Minimum (lbs.)                     | 13,330 | 13,160 | 12,300 | 10,440 | 5,900 | 3,550 | 2,630 | 2,420 |       |      |
| THIRD STAGE EXTENDED                          |        |        |        |        |       |       |       |       |       |      |
| Working Radius (ft.)                          | 9.0    | 13.0   | 16.5   | 19.5   | 23.0  | 26.0  | 30.0  | 32.0  | 33.0  |      |
| Outriggers Maximum (lbs.)                     | 10,140 | 10,140 | 8,340  | 6,450  | 5,370 | 4,140 | 2,920 | 2,130 | 2,200 |      |
| Outriggers Halfway (lbs.)                     | 10,140 | 10,140 | 8,340  | 5,480  | 3,950 | 3,010 | 2,100 | 1,600 | 1,650 |      |
| Outriggers Minimum (lbs.)                     | 10,140 | 10,140 | 6,200  | 3,640  | 2,750 | 2,010 | 1,470 | 1,030 | 980   |      |
| FOURTH STAGE EXTENDED                         |        |        |        |        |       |       |       |       |       |      |
| Working Radius (ft.)                          | 16.5   | 19.5   | 23.0   | 26.0   | 30.0  | 32.0  | 36.0  | 39.0  | 42.0  |      |
| Outriggers Maximum (lbs.)                     | 6,580  | 5,630  | 4,840  | 4,230  | 3,300 | 2,700 | 2,200 | 1,900 | 1,100 |      |
| Outriggers Halfway (lbs.)                     | 6,580  | 5,580  | 4,170  | 3,240  | 2,430 | 1,950 | 1,550 | 1,340 | 990   |      |
| Outriggers Minimum (lbs.)                     | 6,100  | 4,000  | 2,960  | 2,350  | 1,670 | 1,290 | 1,050 | 840   | 630   |      |
| FIFTH STAGE EXTENDED                          |        |        |        |        |       |       |       |       |       |      |
| Working Radius (ft.)                          | 19.5   | 26.0   | 30.0   | 32.0   | 36.0  | 39.0  | 43.0  | 46.0  | 49.0  | 52.0 |
| Outriggers Maximum (lbs.)                     | 5,200  | 3,900  | 3,090  | 2,720  | 2,320 | 2,000 | 1,600 | 1,400 | 1,220 | 990  |
| Outriggers Halfway (lbs.)                     | 5,200  | 3,470  | 2,520  | 2,160  | 1,770 | 1,450 | 1,180 | 990   | 770   | 650  |
| Outriggers Minimum (lbs.)                     | 4,300  | 2,470  | 1,780  | 1,520  | 1,210 | 1,000 | 750   | 610   | 480   | 390  |
| SIXTH STAGE EXTENDED                          |        |        |        |        |       |       |       |       |       |      |
| Working Radius (ft.)                          | 26.0   | 32.0   | 39.0   | 46.0   | 52.0  | 59.0  | 61.0  |       |       |      |
| Outriggers Maximum (lbs.)                     | 3,100  | 2,290  | 1,890  | 1,420  | 1,010 | 660   | 550   |       |       |      |
| Outriggers Halfway (lbs.)                     | 3,100  | 2,280  | 1,560  | 1,090  | 790   | 550   | 440   |       |       |      |
| Outriggers Minimum (lbs.)                     | 2,540  | 1,630  | 1,120  | 720    | 500   | 300   | 230   |       |       |      |



# URW706 MINI-CRAWLER CRANE

|                                      |  | URW706CIURS  | URW706CIUMRS   |
|--------------------------------------|--|--|--|
| <b>Crane capacity</b>                | <b>Capacity:</b>   | 13,200 lbs. @ 10.0 ft.   |  |
| <b>Max working radius</b>            | <b>Maximum:</b>  | 1.7 to 61 ft.  |  |
| <b>Max lifting height</b>            | <b>Approximate:</b>  | 64 ft.   |  |
| <b>Turning radius (ft.)</b>          | <b>Minimum:</b>  | TURNS WITHIN IT'S DIMENSIONS   |  |
| <b>Dimensions (ft.)</b>              | <b>Folded:<br/>(l x w x h)</b>   | 18.4ft. X 5.47ft. X 7.16ft.  | ?  |
| <b>Weight</b>                        | <b>Unladen:</b>  | 17,590 lbs   | ?  |
| <b>Outrigger point loading</b>       | <b>Maximum:</b>  | ??? on standard outrigger pads   |  |
| <b>Winch speed</b>                   | <b>Approximate:</b>  | <b>Single line speed:</b> 144.4 ft./minute at 4th layer<br><b>Hook Speed:</b> 36.1 ft./min at 4th layer with 4-part line | <b>Diesel</b> <b>Electric</b><br><b>Single line speed:</b> 31.2 ft./minute at 4th layer<br><b>Hook Speed:</b> 32.8 ft./min at 4th layer with 4-part line |
|                                      |  |  |  |
| <b>Telescopic system</b>             | <b>Boom Length:</b>  | 16 to 63 ft.   |  |
|                                      | <b>Hydraulic Telescopic with holding valves:</b>   | <b>38.67 ft./35 sec</b>  | <b>Diesel</b> <b>Electric</b><br><b>38.67 ft./35 sec 38.67 ft./48</b>  |
|                                      | <b>Boom type:</b>  | <b>6- section hydraulicity telescoping boom, hexagonal box construction</b>  |  |
| <b>Boom lift speed</b>               | <b>Hydraulic with holding valves</b>   | 0° to 80°/18 sec   | <b>Diesel</b> <b>Electric</b><br><b>0° to 80° /18 sec    0° to 80° /25 sec</b>   |
| <b>Swing rotation</b>                | <b>Worm Drive</b>  | 360 degrees continuous   |  |
| <b>Traction System</b>               | <b>Travel Speed:</b>   | Two Speed  | Low: 1.86 mph    High: 3.92 mph  |
|                                      | <b>Gradability:</b>  | 23°  |  |
|                                      | <b>Track ground pressure:</b>  | 12.47 psi  |  |
| <b>Engine / Motor</b>                | <b>Manufacturer:</b>   | Mitsubishi   | Mitsubishi   |
|                                      | <b>Fuel Capacity:</b>  | 19.6 gal   | 19.6 gal    DNA  |
|                                      | <b>Maximum output:</b>   | <b>24 HP</b>   | <b>Diesel</b> <b>Electric</b><br><b>24 HP</b> <b>10 HP</b>   |
|                                      | <b>Starting method:</b>  | Electric start as standard   |  |
|                                      | <b>Type:</b>   | Diesel   | Diesel & Electric  |
| <b>Standard and safety equipment</b> | Full-function radio remote, centrally located infinitely variable controls, onboard self-diagnostic computer system, hexagonal boom, anti-two block system, automatic hook stow system, hook safety latch, over-winding prevention device and alarm, working area limitation minimum wire rope automatic stop, hydraulic circuit pressure relief valve and bubble-style level for outrigger leveling, Rated Capacity Indicator, (L.M.I) Interlock Monitoring Outrigger System. |  |  |